

XHR311 Datasheet

DUAL-HEATED PRESSURE REGULATOR



Gas
 Liquid
 Diaphragm
 Piston
 Self-Venting
 Non-Venting
 Max Inlet: 414 bar (6,000 psi) | Max Outlet: 150 bar (2,175 psi) | Cv 0.06



INTRODUCING THE XHR311...

The XHR311 is a piston-sensed, dual-heated pressure regulator, designed to maintain sample liquids and gases in their vapour state.

Certified to ATEX directive 2014/34/EU, its two 100W heater cartridges, are inserted in helical machined sheaths, which agitate the media to help with heat transfer and analysis process. Alternatively, the steam-heated option replaces the heater cartridges with steam tubes.

The propriety PCB is easy to wire and incorporates a potentiometer to adjust the heater temperature setting, and independent channel isolation switches for liquid sampling.

Its electrical enclosure meets the requirements of IP66.

ATEX AND IECEX MARKINGS

The markings on the equipment includes:

- Ex II 2G
- Ex db IIC T3 Gb
- 40°C ≤ Ta ≤ 60°C
- CE 2183
- UKCA 0518

FEATURES AND BENEFITS

1 2 X 100W HEATER CARTRIDGES	2 ATEX / IECEX CERTIFIED	3 PISTON SENSING ELEMENT	4 OPTIONAL ENTRY POINTS FOR CABLE SUPPLY
Efficient heaters to maintain sample gases in their vapour state.	Certified for use in category 2 zone 1 hazardous areas. Certificates viewable on www.pressure-tech.com .	Perfect for use in challenging conditions.	Power cable supply from left, right or bottom side to suit installation requirements.

STANDARD MATERIALS OF CONSTRUCTION

PART	MATERIALS
Body and Bonnet	ASTM A479 316/316L Stainless Steel (UNS S31600/S31603)
Main Valve Pin	ASTM A479 316/316L Stainless Steel (UNS S31600/S31603)
Soft Seat	PEEK™ (450G)
Valve Spring	Inconel® X750 (UNS N07750)
Piston	ASTM A479 316/316L Stainless Steel (UNS S31600/S31603)
O-Rings	FKM/FPM (Viton)
Electric Enclosure	Feraloy Iron Alloy

SPECIFICATION

Max. Rated Inlet Pressure	414 bar (6,000 psi)
Outlet Ranges	Up to 150 bar (2,175 psi)
Design Proof Pressure	150% max. working pressure
Seat Leakage	In accordance with ANSI/FCI 70-3
Weight	4.6kg (10.1lbs)

Note: Pressure regulator rating may be limited by connection type, Cv and/or seat material. Contact the office for specific pressure or temperature requirements.

NOTE: Product availability and specifications contained herein are subject to change without notice. Consult local distributor or factory for potential revisions and/or service related issues. Pressure Tech Ltd support with product selection recommendations only - it is the users responsibility to ensure the product is suitable for their specific application requirements.



PRESSURE TECH LTD
 Unit 24, Graphite Way, Hadfield, Glossop, Derbyshire, UK, SK13 1QH
 +44 (0)1457 899 307 | sales@pressure-tech.com | www.pressure-tech.com
DESIGNED, MANUFACTURED AND BUILT IN THE UK
 © 2025 Pressure Tech Ltd. All Rights Reserved.

090425

PAGE:
1 OF 4

XHR311 Datasheet

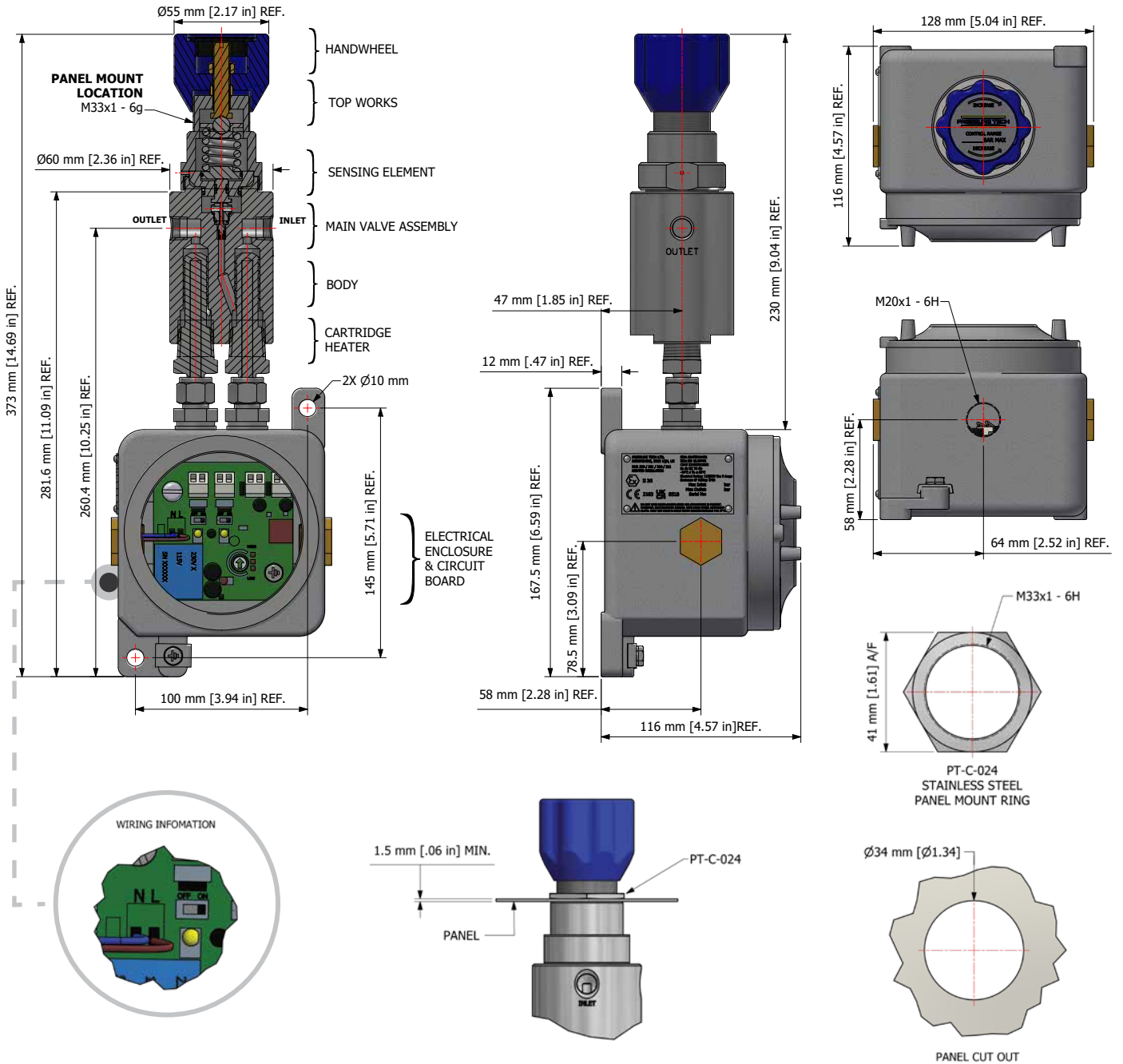
DUAL-HEATED PRESSURE REGULATOR



● Gas ● Liquid ● Diaphragm ● Piston ● Self-Venting ● Non-Venting |
 Max Inlet: 414 bar (6,000 psi) |
 Max Outlet: 150 bar (2,175 psi) |
 Cv 0.06

DRAWINGS AND INSTALLATION DIMENSIONS

Dimensions shown for 1/4" NPT option and standard configurations only - please contact the office for other options.



Note:
All gauge ports are 1/4" NPT as standard.

NOTE: Product availability and specifications contained herein are subject to change without notice. Consult local distributor or factory for potential revisions and/or service related issues. Pressure Tech Ltd support with product selection recommendations only - it is the users responsibility to ensure the product is suitable for their specific application requirements.



PRESSURE TECH LTD
 Unit 24, Graphite Way, Hadfield, Glossop, Derbyshire, UK, SK13 1QH
 +44 (0)1457 899 307 | sales@pressure-tech.com | www.pressure-tech.com
DESIGNED, MANUFACTURED AND BUILT IN THE UK
 © 2025 Pressure Tech Ltd. All Rights Reserved.

XHR311 Datasheet

DUAL-HEATED PRESSURE REGULATOR

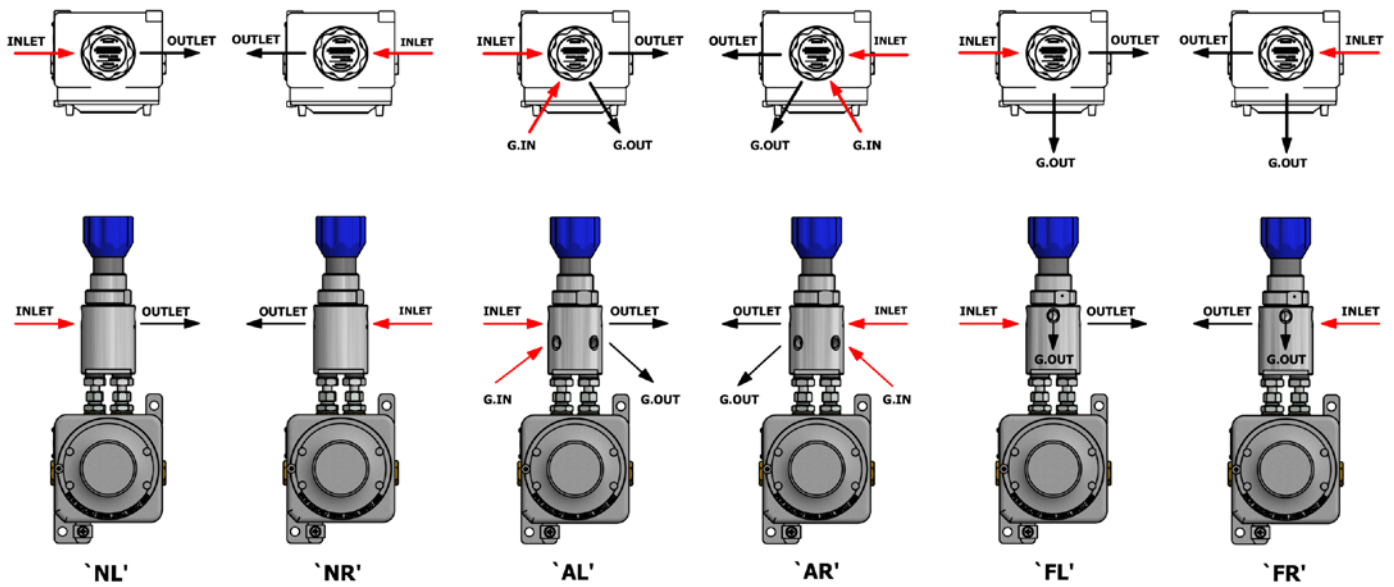


Gas
 Liquid
 Diaphragm
 Piston
 Self-Venting
 Non-Venting
 Max Inlet: 414 bar (6,000 psi)
 Max Outlet: 150 bar (2,175 psi)
 Cv 0.06

FLOW CURVE

Please contact the office for further information.

PORTING CONFIGURATIONS



Notes:

'AL' and 'AR': Gauge ports are not in the same axis as inlet and outlet ports

Additional porting configurations are available - please contact the office for further information.

NOTE: Product availability and specifications contained herein are subject to change without notice. Consult local distributor or factory for potential revisions and/or service related issues. Pressure Tech Ltd support with product selection recommendations only - it is the users responsibility to ensure the product is suitable for their specific application requirements.



PRESSURE TECH LTD

Unit 24, Graphite Way, Hadfield, Glossop, Derbyshire, UK, SK13 1QH
 +44 (0)1457 899 307 | sales@pressure-tech.com | www.pressure-tech.com

DESIGNED, MANUFACTURED AND BUILT IN THE UK

© 2025 Pressure Tech Ltd. All Rights Reserved.

090425

PAGE:
3 OF 4

XHR311 Datasheet

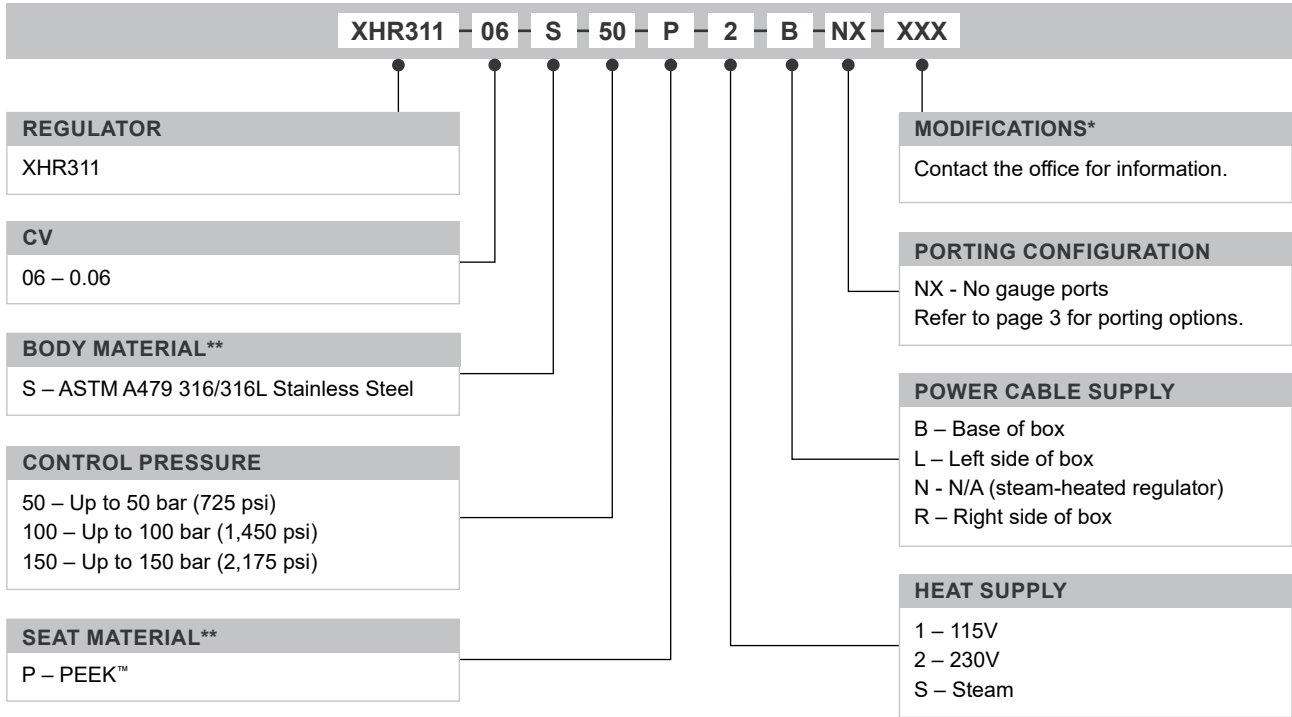
DUAL-HEATED PRESSURE REGULATOR



Gas
 Liquid
 Diaphragm
 Piston
 Self-Venting
 Non-Venting
 Max Inlet: 414 bar (6,000 psi)
 Max Outlet: 150 bar (2,175 psi)
 Cv 0.06

ORDERING INFORMATION

To build a Pressure Tech part number, simply combine the characters identified below in sequence:



OPTIONAL EXTRAS		
	PART NUMBER	DESCRIPTION
Service Kit	SRK-LF311...	Various options available
Panel Mounting Ring	PT-C-024	-

Note: Ancillary Equipment and additional Service Kit options also available.

TRADEMARK: PEEK™ is a trademark of Victrex PLC

* Where applicable
** Other materials may be available

NOTE: Product availability and specifications contained herein are subject to change without notice. Consult local distributor or factory for potential revisions and/or service related issues. Pressure Tech Ltd support with product selection recommendations only - it is the users responsibility to ensure the product is suitable for their specific application requirements.



PRESSURE TECH LTD
 Unit 24, Graphite Way, Hadfield, Glossop, Derbyshire, UK, SK13 1QH
 +44 (0)1457 899 307 | sales@pressure-tech.com | www.pressure-tech.com
DESIGNED, MANUFACTURED AND BUILT IN THE UK
 © 2025 Pressure Tech Ltd. All Rights Reserved.

090425